



LET'S GO TO SEOUL, KOREA!

DENTIUM & SIDEX 2023 TOUR PACKAGE

Tue-Sun, 23rd to 28th of May 2023



KOREA TOUR PACKAGE

FREE



SOUTH KOREA
CITY TOUR

FREE



DENTIUM COURSE
HANDS-ON

FREE



SIDEX 2023
EXHIBITION

FREE



DENTIUM
FACTORY
TOUR

FREE



PREMIUM
6DAYS HOTEL

minimax
implant & medical

Dentium
For Dentists By Dentists

 **SIDEX 2023**
Seoul International Dental Exhibition
& Scientific Congress



LET'S GO TO SEOUL, KOREA!

DENTIUM & SIDEX 2023 TOUR PACKAGE



Buy 30 Dentium Implants,
You can enjoy Everything of
SIDEX Package for free!

1

SIDEX

SIDEX is the largest Dental exhibition in Korea.
You can also participate in various conferences.

2

HOTEL

5 nights 6days stay at "Shillastay Hotel" in Gangnam, Seoul
(Included Hotel breakfast)

3

DENTIUM FACTORY TOUR

Experience the production process of implants vividly at Dentium's high-tech
factory in Korea.

4

HANDS-ON COURSE

Advanced Hands-on course is held at the Dentium head office.

5

CITY TOUR

Explore Seoul through the eyes of a local during this private tour.
Learn about both the traditional and modern sides of the dynamic
Korean capital.

FREE

* Flight ticket is not included. / Schedule is subjected to change without notice.



LET'S GO TO SEOUL, KOREA!
SIDEX 2023



SIDEX, Korea's representative dental exhibition

Date. Sat, 27th of May 2023

Venue. COEX Convention & Exhibition Center

To commemorate the 98th anniversary of the establishment of the Seoul Dental Association, the 20th Seoul International Dental Exhibition and Scientific Congress (SIDEX 2023) will be held at COEX, Seoul for 3 days from May 26 to 28, 2023.

SIDEX has been leading international trends by holding an international scientific congress where you can experience the latest clinical know-how and a dental exhibition where you can check the current state of the cutting-edge dental industry.



minimax
implant & medical

www.minimaximplant.com.au
Suite 3 Level 2, 394 Lane Cove Rd,
Macquarie Park NSW 2113

t. 02 8084 2900
e. info@minimaximplant.com.au
f. minimaximplant.com.au



LET'S GO TO SEOUL, KOREA! DENTIUM TOUR



Dentium
For Dentists By Dentists

Dentium Implant Tour

Date. Thu, 25th of May 2023

Venue. Dentium Head Office / Factory

Dentium is an implant manufacturer founded in South Korea in 2000. It offers a range of 17 bone level and tissue level implants with tapered, straight and tapered apex shapes. It is distributed in over 66 countries. The company is headquartered in South Korea.



Factory Tour

Experience the production process of implants vividly at Dentium's high-tech factory in Korea.



Hands-on Course

Advanced Implant Hands-on course is held at the Dentium head office.



LET'S GO TO SEOUL, KOREA! HOTEL & CITY TOUR

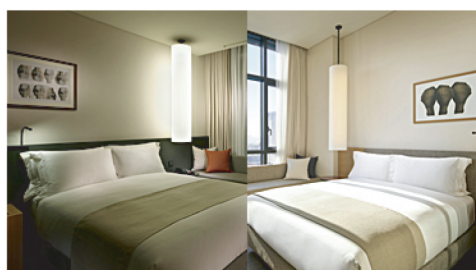
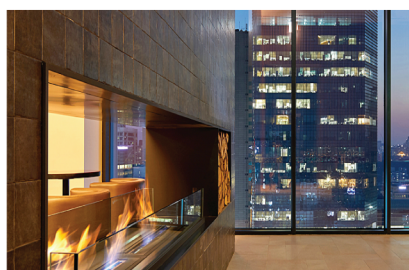


Hotel

Date. Tue-Sun, 23rd to 28th of May 2023 (5 nights 6 days stay)

Hotel. SHILLA STAY SAMSUNG (Gang-nam, Seoul)

SHILLA STAY
SAMSUNG



Seoul City Tour

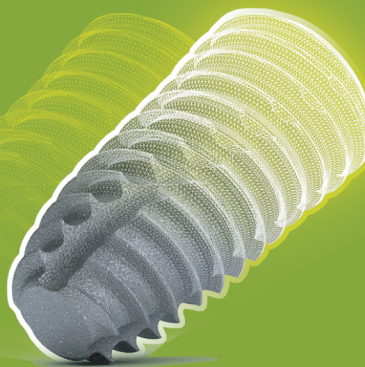
Explore Seoul through the eyes of a local during this private tour.
Learn about both the traditional and modern sides of the dynamic Korean capital.



Dentium IMPLANT

For Dentists By Dentists

Systemic solution to your cases.
A wide range of implant types and prosthetic options will help you achieve a more predictable implant surgery outcome.




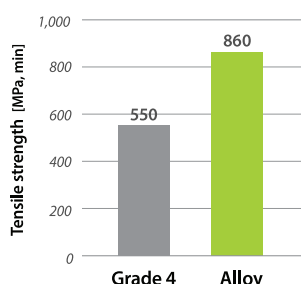
SuperLine Universal **Bone Level** Implant System

S.L.A Surface Sandblasted with Large grits and Acid etched

- S.L.A. Surface allows good bone-to-implant contact with good clinical performance, maintaining crestal bone margin.

Joint Stability & Improved Strength for Zirconia Crown

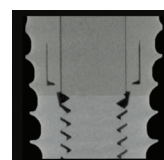
- Material : Grade 4  Alloy
- Long hex design : Improved recognition



Improved Soft Tissue Management

- Concave abutment design
- Non-coating

Improved Wall Thickness



- Less screw, abutment & fixture fracture

Double Thread & Tapered Design



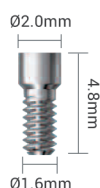
- Double threaded tapered body design provides good success rate in immediate loading cases.



SimpleLine II **Tissue Level** Implant System

Ti-Retaining Screw

- Able to accommodate occlusion with ease.
- Minimized risk of resin falling apart through sufficient attachment space.



SCA Abutment

- Offer additional gingival height options
- Implantation with the SCA Abutment
- Able to reproduce emergence profile
- Effective soft tissue management

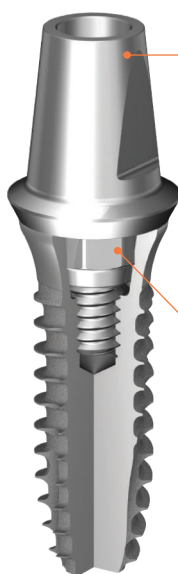
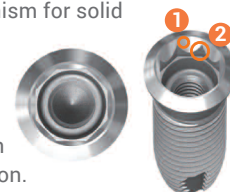
Tap Drill

- Tap drills for exquisite surgery to enable early loading
- Smooth and precise surgery with tap drill in type 1~3 bone.
- 4mm of tapping depth for optimum torque control



Internal 8° Morse Taper and Octagon Connection

- 1 Screw loosening is well prevented due to the cold welding mechanism for solid abutment application.
- 2 Maximized depth of the octagon design to enable easy adaptation verification for dual abutment application.



Slim Lrñe Mini Implant System for Overdentures & Narrow Ridge cases

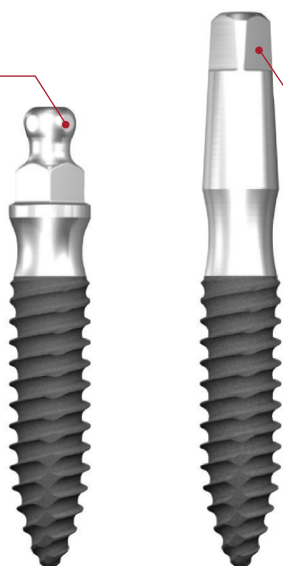
Tilting Angle



- Up to ± 15 degrees of tilting angles to accommodate the pathway of the implant

One Body Design

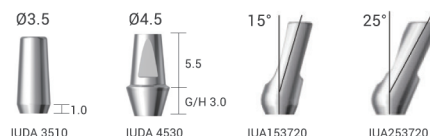
- S.L.A. Surface enables immediate or early loading
- Mini ball ($\varnothing 1.8$) & metal socket make denture production easy
- Wide range of choice for prosthetic options



Mini Ball Type

Fix Type

Abutment



- Slanted implanting is possible with the combination of angled abutment (15° , 25°)
- Cement the final restoration onto the abutment

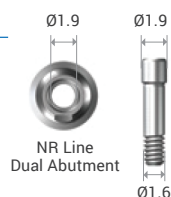


- Selecting direction is easy due to the Octa 45° rotation angles

NR Lrñe Narrow Ridge 3.1mm Implant

Abutment Screw

- $\varnothing 1.9$ hole size for occlusion



Narrow, but Strong

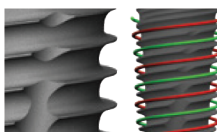
- Body $\varnothing 3.1$ fixture is very useful for narrow ridge
- Good for high occlusal stress

Simple GBR

- Minimise bone and gingival resorption

Extended Thread Design

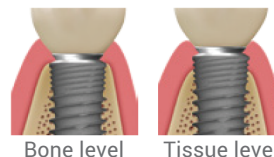
- Extended thread design helps increase the initial stability



3.1mm

Hybrid Zone for Bone & Soft Tissue

- Compatible with bone & tissue level
- Stress free GBR



Firm & stable connection (Internal 10° taper & square shape)

- Less screw, abutment & fixture fracture

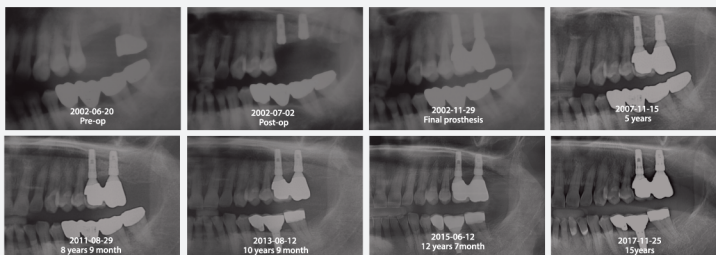


- 10° taper & square shape between implant and abutment interface ensures tight sealing
- Square connection

Dentium
For Dentists By Dentists

over
20 years
of Long term
data

LONG-TERM
CLINICAL CASE



minimax
implant & medical

www.minimaximplant.com.au
Suite 3 Level 2, 394 Lane Cove Rd,
Macquarie Park NSW 2113

t. 02 8084 2900
e. info@minimaximplant.com.au
f. minimaximplant.com.au



MORE INFORMATION
BOOK NOW!
02 8084 2900

minimax
implant & medical

Dentium
For Dentists By Dentists

 **SIDEX 2023**
Seoul International Dental Exhibition
& Scientific Congress