

[BIOMATERIALS]

Straumann® Membrane Flex
Mastering endurance.





Straumann® Membrane Flex

Minimally crosslinked porcine peritoneum collagen membrane

Made from intact porcine peritoneum, Membrane Flex is a reliable and strong collagen membrane for everyday cases. It offers exceptional flexibility and biomechanical strength, and resorbs predictably. What's more, it naturally conforms to defects and contours. Once in place, it can be firmly anchored to surrounding tissue, with minimal risk of tearing or detachment.*

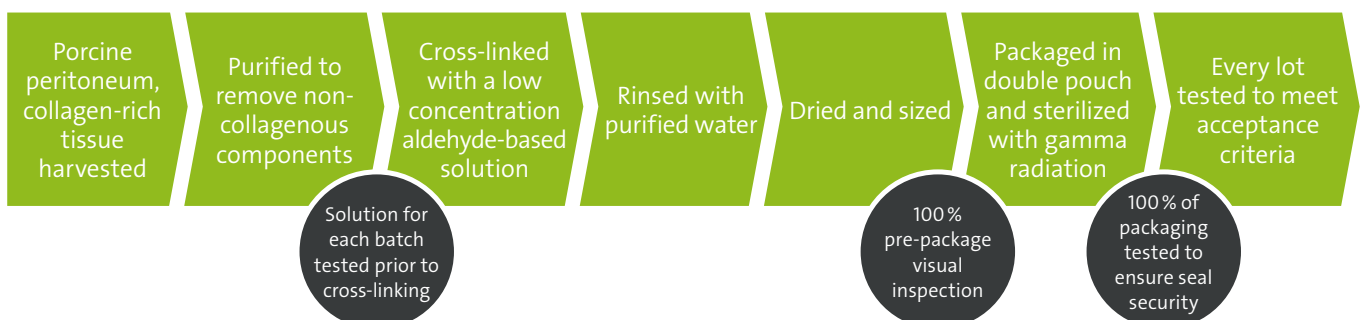


FEATURES AND BENEFITS

Desirable handling characteristics	<p>Not side specific.</p> <p>Can be placed dry or hydrated.</p> <p>Even when hydrated, does not adhere to gloves or instruments.</p> <p>Can be easily repositioned for precise placement.</p> <p>Takes sutures or tacks with ease.</p>
High tensile strength	Proven biomechanical strength enhances fixation assurance.*
Predictable & controlled resorption	<p>Protects the graft area from unwanted soft tissue infiltration during the initial phase of healing.</p> <p>Resorbs predictably over 3 to 4 months as new host collagen is simultaneously regenerated.*</p>
Highly purified porcine peritoneum and minimal crosslinking	The intact tissue of porcine peritoneum provides inherent strength which is further minimally crosslinked, leading to predictable resorption and desirable handling characteristics.

*Data on file with manufacturer

PROCESSING ASSURES COMPATIBILITY





PROPERTIES

Attribute	Description
Origin	Porcine peritoneum
Composition	Types I and III collagen
Structure	Minimally cross-linked with glutaraldehyde
Thickness	0.3 – 0.5 mm
Degradation time	12–16 weeks
Storage temperature	Room temperature (15–30 °C)
Shelf life	3 years



Courtesy of Prof. Carlos Nemcovsky

INTENDED USE

- Simultaneous use of guided bone regeneration (GBR)-membrane and implants
- Augmentation around implants placed in immediate extraction sockets
- Augmentation around implants placed in delayed extraction sockets
- Localized ridge augmentation for later implantation
- Alveolar ridge reconstruction for prosthetic treatment
- Filling of bone defects after root resection, cystectomy or removal of retained teeth
- Guided bone regeneration in dehiscence defects
- Guided tissue regeneration procedures in periodontal defects

Available in the following sizes

Code	Description	Product
070.008	15 × 20 mm	Straumann® Membrane Flex
070.009	20 × 30 mm	
070.010	30 × 40 mm	

APPLICATION AND HANDLING

Rehydration

Can be placed dry or hydrated. Even when hydrated, the membrane does not adhere to gloves or instruments. If the clinician prefers the handling characteristics of the hydrated collagen, the membrane can be hydrated in sterile water or saline solution for approximately five minutes prior to final placement.

Shaping

Can be trimmed to the size and shape of the defect in the dry or wet state using sharp, sterile scissors.

Placement

Not side specific, and either side can be placed facing the bone. The membrane easily drapes over defects and naturally conforms to contours. It can be easily repositioned for precise placement if necessary.

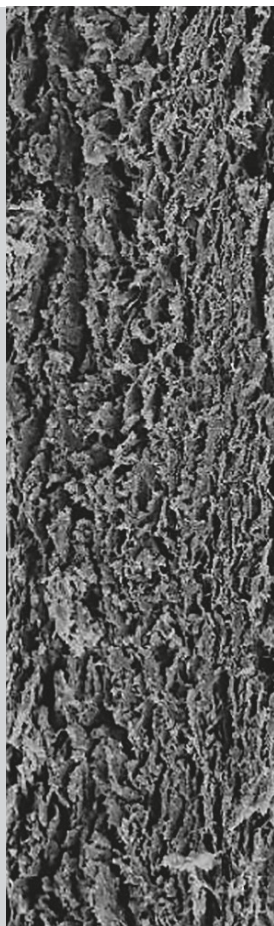
Straumann® Membrane Flex should overlap the walls of the defect by at least 2 mm to allow complete bone contact and to prevent gingival connective tissue invasion below the material.

Fixation

Fixation may be indicated to avoid displacement due to loading or mobilization. It takes sutures or tacks with ease. It can be affixed by resorbable tacks, or sutured in place using absorbable sutures and a noncutting needle.

Exposure

The mucoperiosteal flap is sutured over the collagen membrane and the wound should be closed completely to avoid accelerated resorption due to membrane exposure. The membrane is expected to be resorbed in approximately 12 to 16 weeks.



Master any challenge.

- Flexible and strong collagen membrane for soft tissue support and graft containment
- Not side specific and not sticky
- Manufactured from highly purified intact porcine collagen
- Biocompatible and resorbs predictably
- Naturally conforms to defects and contours
- Buy online at www.straumann.com/eshop



To learn more, contact your Straumann Territory Manager or Customer Service in your country.



490.325/en/B/00 08/21

International Headquarters

Institut Straumann AG
Peter Merian-Weg 12
CH-4002 Basel, Switzerland
Phone +41 (0)61 965 11 11
Fax +41 (0)61 965 11 01
www.straumann.com

Manufacturer

Collagen Matrix, Inc.
15 Thornton Road
Oakland, New Jersey
USA

Literature:

Li et al., Materials Science, 2015