

EzRay Air™ Wall

WEIGHT INNOVATION

WALL-MOUNTED INTRAORAL X-RAY



WEIGHT INNOVATION WITH CNT (CARBON NANO TECHNOLOGY)

The wall mounted EzRay Air Wall is a lightweight x-ray device designed for easy handling and stable positioning for optimal image quality on your intraoral x-rays.

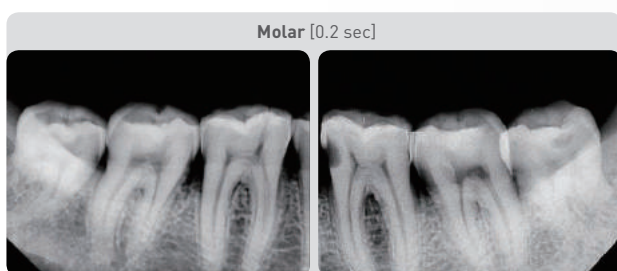
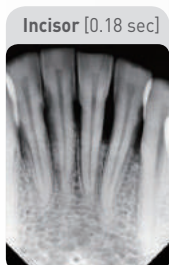
The EzRay Air Wall's lightweight tube head provides users with a stable and easy to use x-ray source which maximizes image clarity and optimizes workflow.

SMART DIAL FOR ALL FUNCTIONS

The operating panel located on the tube head creates a much simpler and much faster workflow. Using the smart dial, practitioners will notice a decrease in preparation time and less of a need to remember complicated control buttons and configurations.

SECURE CLEAR IMAGES WITH A 0.4MM FOCAL SPOT

Compared to other intraoral x-rays on the market, the EzRay Air Wall provides optimal image quality and additional diagnostic value with a 0.4mm focal spot.



* Exposure Condition : 65kV, 3.0mA

SPECIFICATIONS [EzRay Air Wall : **VEX-S300W**]

Focal Spot	0.4 mm (IEC 60336)
Tube Voltage	65 kV
Tube Current	3.0 mA
Exposure Time Range	0.05 ~ 0.5 (0.01s increment)
Source to Skin Distance	Min. 20 cm
X-ray Field	Default : 60 mm Round, 30x40 mm Rectangular Optional : 20x30 mm Rectangular
Arm Length [Option]	450mm, 600mm, 900mm
Accessories	Remote Exposure Switch (Hand Switch / Doorbell Switch)
Weight	15.9 kg (Arm Length 450 mm)
	16.6 kg (Arm Length 600 mm)
	17.9 kg (Arm Length 900 mm)

* The specifications are subject to change without prior notice.

DIMENSIONS [Unit: mm]

