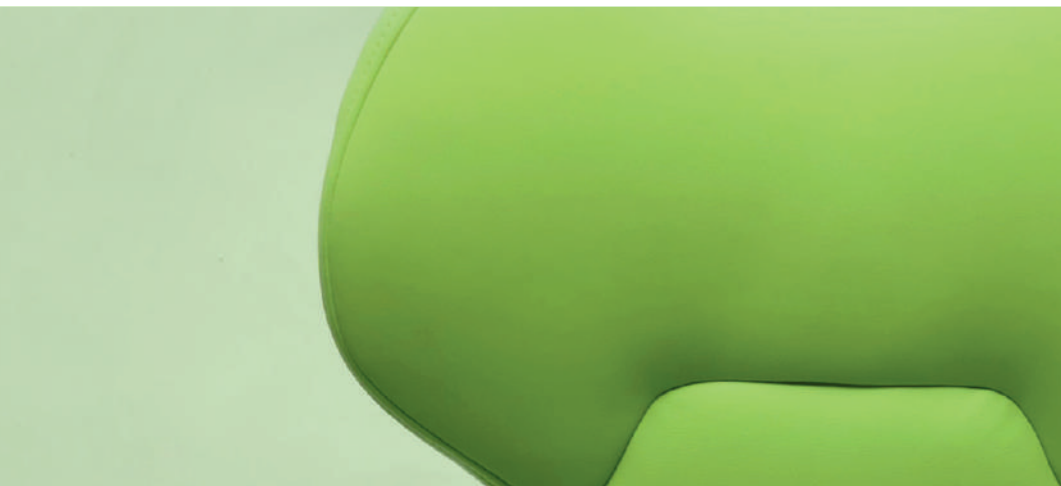


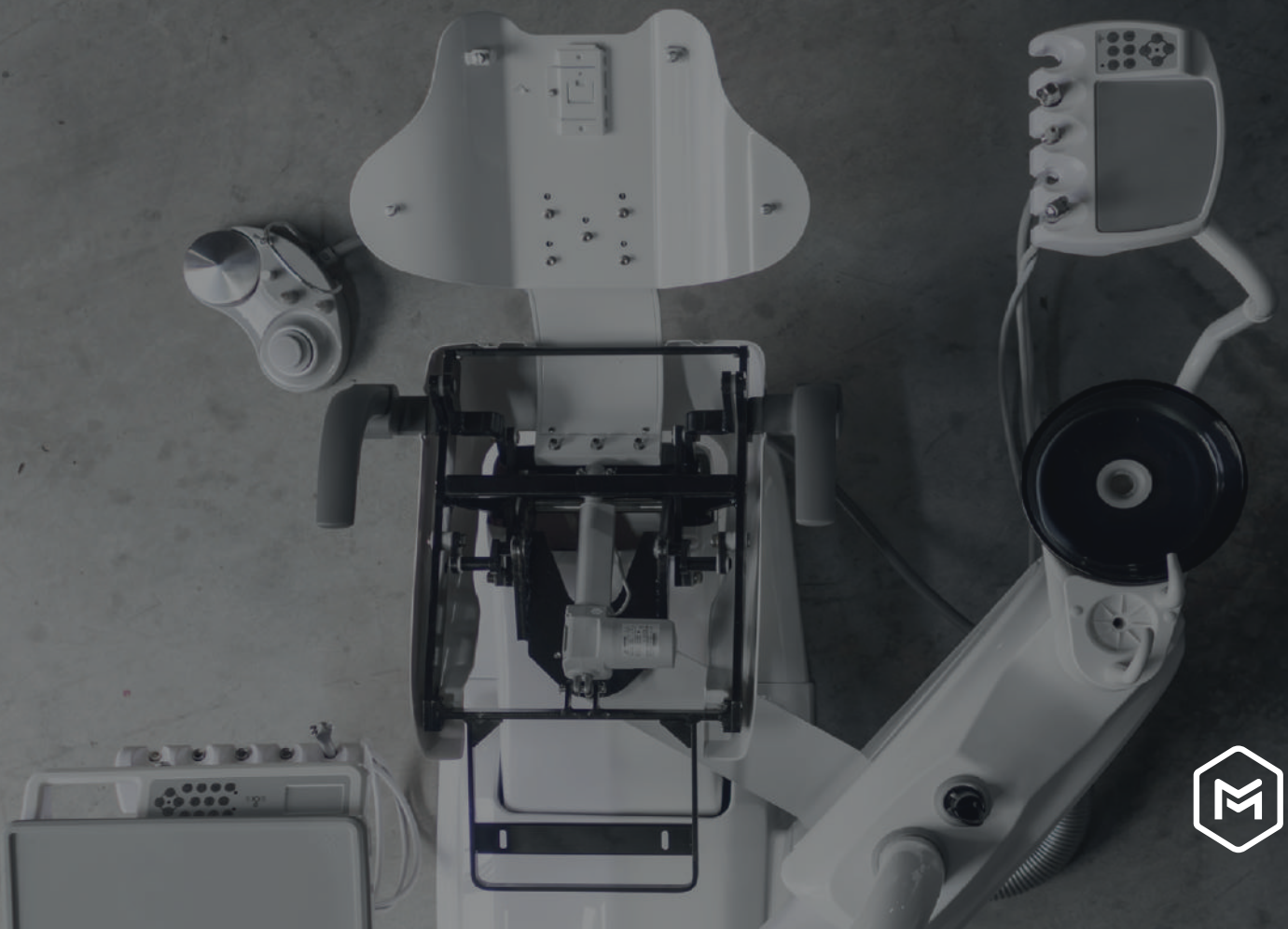
simple&smart

KISS 

Keep It Simple & Smart



simple inside
less assistance need
easy installation
less electronics
for a **MORE RELIABLE UNIT**
That's why we are
simple & smart





1 CHARACTERISTICS

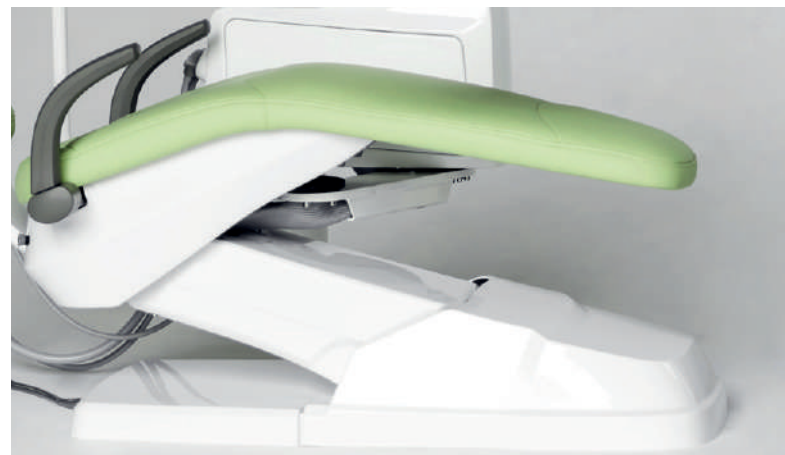




CHARACTERISTICS

COMFY & COZY

improving ergonomics



The **seat** and the **backrest** have been designed to **improve the patient's comfort and stability** on the chair. The particular ergonomics allows the doctor to work in a more suitable position. Working in 3 o'clock and 9 o'clock position will be easier.

The structure of the **backrest** is in metal and its extra thin design improves the ergonomics of the seat and makes the approach of the doctor to the patient much more easier, in this way the doctor can reach a **better working position**.

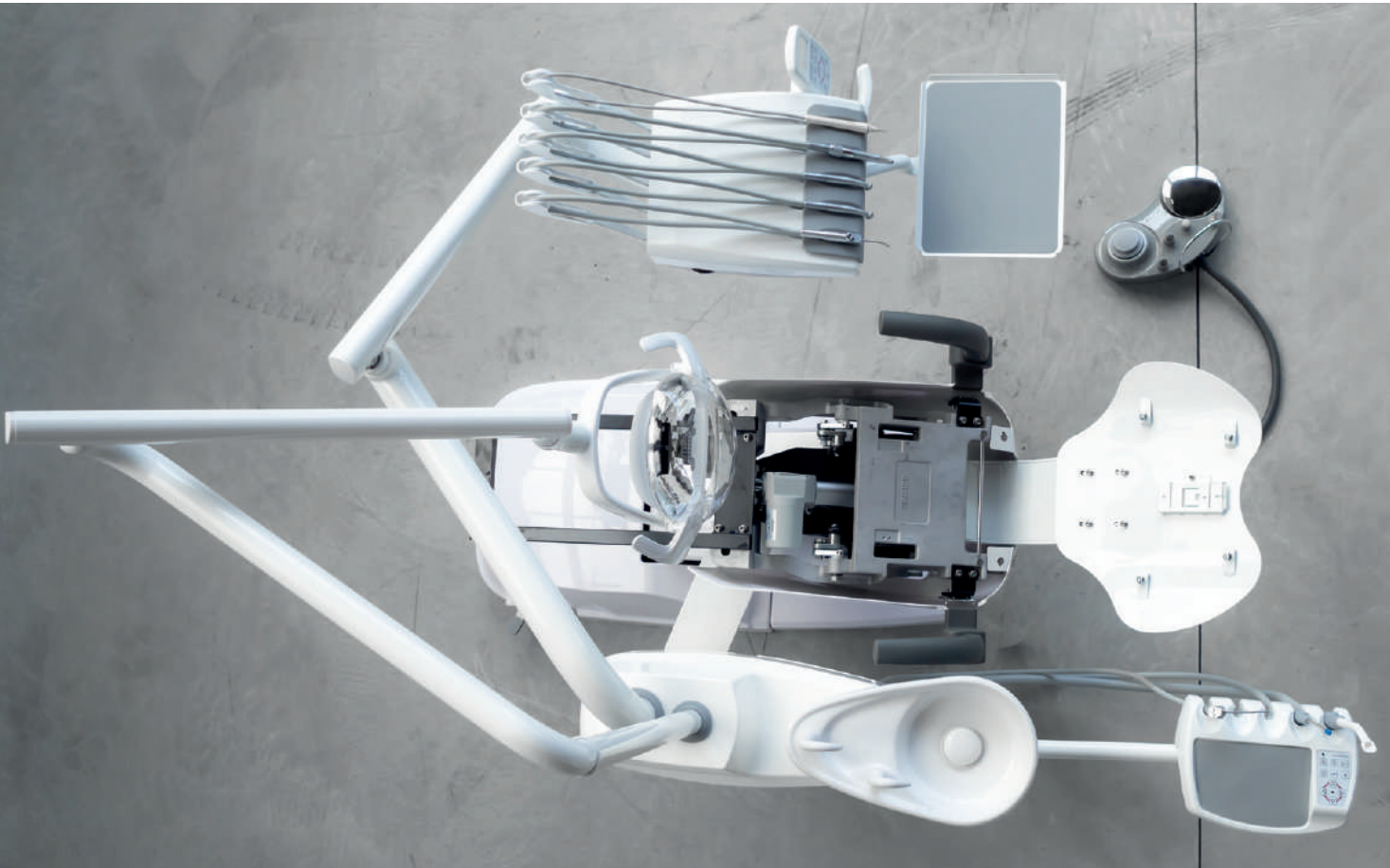
The design of the **chair base** grants a wider movement of the seat. It is thin and allows the chair to reach a **lower position**, to grant a wider working space and improve the doctor 's comfort during the daily practice.



CHARACTERISTICS

GOOD TO THE BONE

resistent structure, performing features



The **structure** of the unit is built to last in time, solid and resistant grant a perfect stability and durability.

The **water unit** can rotate to allow the doctor to work at 3 o'clock or to allow a better positioning of the assistant. The water unit's internal structure and the most fragile parts of the dental unit are made in **aluminum**. This feature allows to reduce the chair weight, making the movement easier to manage.

The SS_KISS is equipped with a **disinfection system**. There is a tank inside the water unit for the disinfection of the water lines that can be filled with a proper product and activated by a special switch located inside the water unit, to avoid any possible accidental activation during the daily work. There are two separated **airtight filters**, one for each suction cannula.

The SS_KISS is suitable also for **left-handed** doctors. Adapting the unit to left-handed users is very quick and easy.



CONF IGUR ATION





CONF IGUR ATION

FIT YOUR SPACE

pick what you need

You can choose which kind of **INSTRUMENT TRAY** is more suitable for you, based on your habits.

A HANGING-A TYPE



B HANGING-B TYPE



C TOP MOUNTED



No matter what you choose,
there will be no additional costs.



STANDARD CONFIGURATION

- Ergonomic chair
- Instruments tray with 5 cordon modules:
 - 1 syringe with 3 functions
 - 1 WP scaler
 - 1 EMS or DMT or Satelec
 - 3 cordons midwest type (2 with optic fibre, 1 without optic fibre)
- Assistant tray with:
 - 1 syringe with 3 functions
 - double cannulas for strong and weak suction
- 15 function control panel on doctor tray
- 10 function control panel on assistant tray
- 3 programmable positions + reset position + last position
- Cushions in high quality Fiber leather, anti snatch
- Doctor stool in Fiber leather with 3 adjustable position settings



- Dark glass spittoon bowl
- Rotatable water unit
- Silicone, autoclavable pads for trays
- Disinfection system or pure water system
- Led eco lamp with sensor, 30.000 lux
- 1 left armrest
- Installation available also for left-handed doctors



CUS
TOM
IZE

your
dental
unit

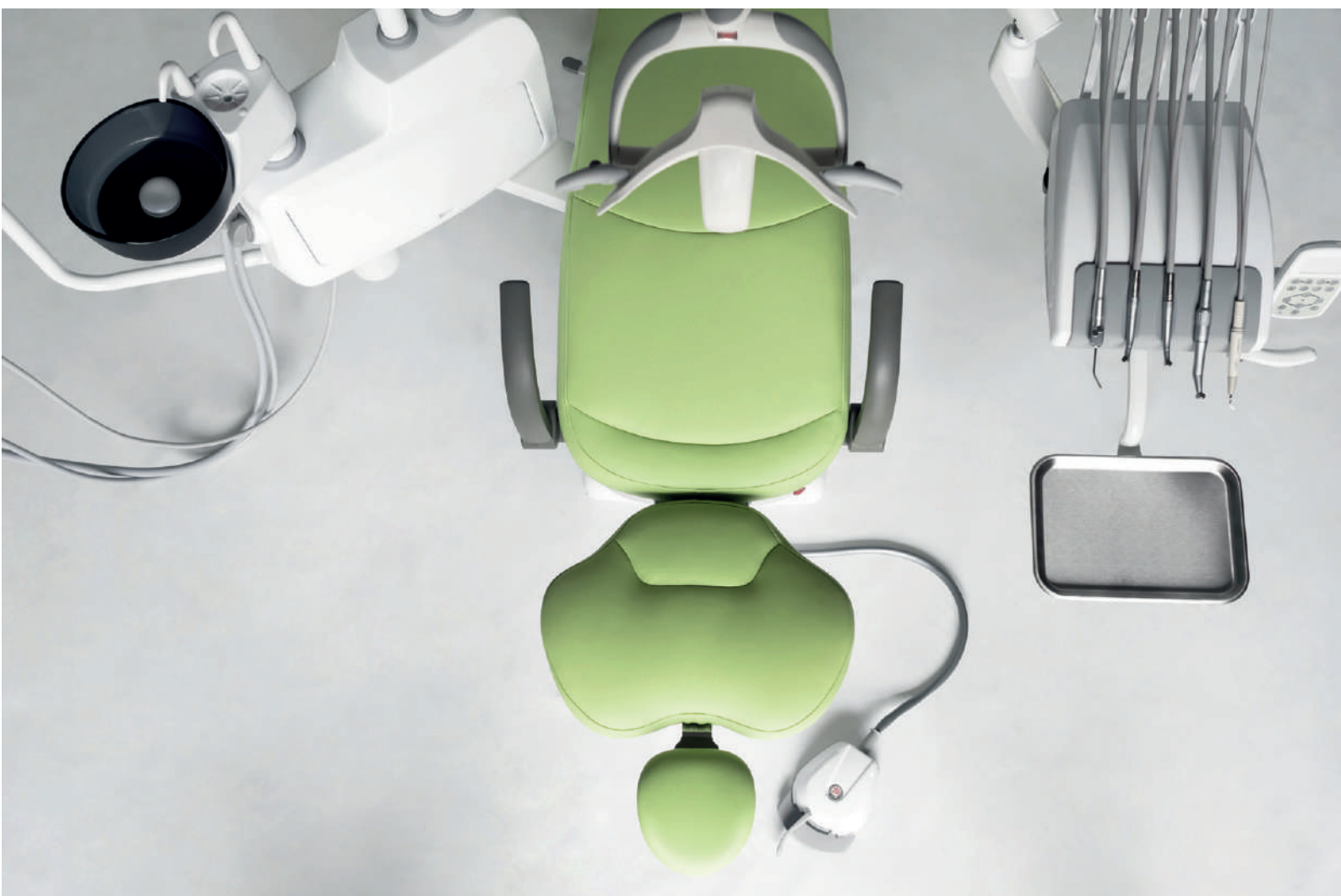




CUS
TOM
IZE

EXPRESS YOURSELF

you ask - we do



Our dental units can be equipped, according to your needs, with the **addition of many options**.

The internal simplicity of the machine remains the same but, following your requests, **we can customize your unit in order to make it perfect for you!**

Your experience and feedbacks help us to constantly improve our unit and find the best solution in any situation.

We have a special team which can fulfill those requests that lie outside the standard production process. Therefore it is possible to adjust ergonomic and functional aspects of the unit according to your requests.

If you have a wish, we try to make it real!



OPTIONALS

accessories

lamps
handpieces
micromotors
valves
instruments cart
maintenance



FIBER LEATHER

More comfort with seams! The standard cushions in PU Leather are manufactured without seams as they can be cleaned more easily. On the other hand, the Fiber Leather seat grants an **higher sense of comfort** to your patients.

There is a standard range of colors but you can also customize it choosing within a range of more than 200 colors.

EXTRA STOOL

An extra stool can be suitable for your assistant. Different colors are available to meet your requests and your needs.



RIGHT ARMREST

The right armrest is not included in the standard configuration as many doctors prefer not to have it. But, if you want to increase the comfort of your patients, you can add it to your customized chair.



OPTIONALS

accessories
lamps
handpieces
micromotors
valves
instruments cart
maintenance



Operating Surgical LED light

Dental LED surgical lamp LED. This LED surgical light is specially designed to illuminate the work area during surgery and other dental procedures.

This LED is widely used in:

- Dental prosthetics
- Dental implantology
- Processing of polymers

Thanks to a modern complete set, the lamp satisfies requirements in work at any height, at any inclination and in any position. It is possible to mount it on the ceiling, on the wall and directly on the dental unit.

A wide range of exposure provides a convenient overview. Due to the uniform lighting LED reduces eye strain and fatigue, which is very important with prolonged use.

Key advantages:

- Easy Dial Control
- Motion sensor
- Removable handle that is autoclaved
- Auxiliary handles
- Three modes: the mode of processing of polymer fillings, the mode of dental prosthetics and the surgical mode
- No shadow in the surgical mode.



Specification

Focal distance : 650-805mm
Focal pattern size : 160x110mm
Input Voltage : 100-240VAC, 50/60Hz, 1.5A
Colour temperature : 3000/4700/5500 K
Wide Head size : 360(W)x 360(D)x110(H)mm
LED: 9EA
Lux : 12,000 (min) /60,000 (max)



OPTIONALS

accessories
lamps
handpieces
micromotors
valves
instruments cart
maintenance



WOODPECKER SCALER

With light
EMS compatible
Satelec compatible on request



W&H HIGH-SPEED TURBINE TG-98L

Ring LED+, 5x spray,
Head size $\varnothing 11,5$ mm, 24W*, 360,000 rpm
FG burs $\varnothing 1.6$ mm for bur lengths up to
25 mm
Ceramic ball bearings, coupling system
Roto Quick
Type : W&H & KAVO& NSK Available



W&H 1:5 HIGH POWERD ELECTRIC WG-99LT

1:5, Quattro Spray,
head size $\varnothing 9,5$ mm,
press-button chuck system
for FG burs $\varnothing 1,6$ mm, glass
rod with Light



W&H 1:1 HIGH POWERD ELECTRIC WG-56LT

1:1, single Spray,
head size $\varnothing 9,5$ mm,
press-button chuck system
for contra-angle burs $\varnothing 2,35$
mm, glass rod with Light



OPTIONALS

accessories
lamps
handpieces
micromotors
valves
instruments cart
maintenance

The instrument tray can be equipped with **one or more micromotors**. Micromotors can be pneumatic or electric depending on the requirements of each customer. **All contrangles, from all brands, can be adapted on these two micromotors.**

PNEUMATIC MICROMOTOR



Pneumatic micromotor without light, 20.000 rpm. Internal spray.

The pneumatic micromotor can be directly applied to the cordon without any control board. Speed can be controlled through pedal or manually on the handpiece.

ELECTRIC MICROMOTOR

Definitive LED model.
With light, internal spray, brushless system, 40000 rpm.
If no control panel is selected, the speed of the micromotor is managed simply through the pedal. The revers control is manual. There is no digital torque control.





OPT
ION
ALS

accessories
lamps
handpieces
micromotors
valves
instruments cart
maintenance

CONTROL PANELS FOR ELECTRIC MICROMOTORS

If you want to have a **greater control of the micromotor** you can choose between two control panels, analog or digital. Both panels can also control two electric micromotors.

LCD DIGITAL DUOPAD

The digital panel allows you to control the speed, torque, rotation and light of the micromotor. The controls are digital and take place through the dedicated touch screen panel. With this solution it is not possible to have more memory usage





OPTIONALS

accessories
lamps
handpieces
micromotors
valves
instruments cart
maintenance

On all our dental units we install **DÜRR** valves, according to the specific requests of each customer and to the type of suction system present in the clinic. Our dental units are preset by default to be connected to a liquid or wet suction machine.

In addition, it is possible to integrate the unit with:



1. CAS1

This valve allows to join all the valves at the following points 2, 3, 4 together. It also has an integrated amalgam separator. This solution is available only for SS_ONE and SS_KISS models.

2. CS1 AIR/WATER SEPARATOR

This valve allows to fit the unit for the connection to a dry suction motor.



3. PLACE SELECTION VALVE

In case of multiple installations (two units or more connected to a single suction motor).

4. SPITTOON BOWL VALVE

To convey the drain of the basin towards the aspirator (in case there is just one tube at the base of the chair).



5. VENTURI SYSTEM

To be installed in those situation where there is no suction machine.

It is very important to analyze the situation of the clinic before ordering the unit. **The S&S staff will help you and suggest you the best solution to fit the unit to your system.**



OPTIONALS

accessories
lamps
handpieces
micromotors
valves
instruments cart
maintenance



In replacement to the instrument tray you can have your dental unit with the instrument cart. The cart has the same equipment as the instrument tray:

- **five cordon modules on doctor tray** :
 - 1 syringe with 3 functions
 - 1 WP scaler, EMS compatible with 5 tips included
 - 3 cordons (2 with optic fibre, 1 without optic fibre) midwest type
- **15 function control panel**
- **x-ray viewer**



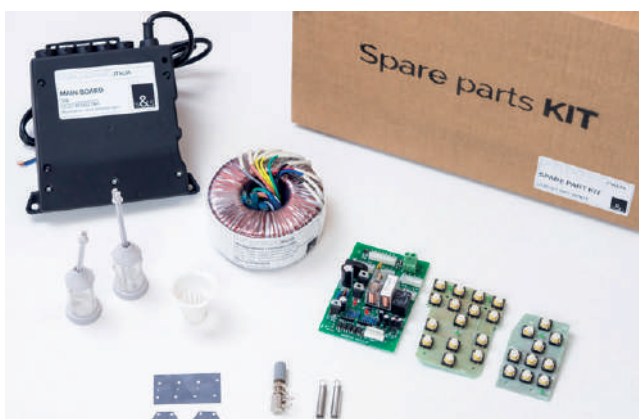
OPTIONALS

accessories
lamps
handpieces
micromotors
valves
instruments cart
maintenance

Our aim is to be as fast as possible in assisting you. That's why we have all the spare parts ready for the delivery and they can be shipped within 12 hours from the reception of the request.

In order to be even faster in solving your possible problems, we created **2 SPARE PARTS KITS**. If you keep these kits in your warehouse or clinic, you can solve any possible problem in a short time.

BASIC SPARE PARTS KIT



- All the electrical boards of the unit (1 main board, 1 transformer, 1 pcb for the water unit, 1 assistant tray pcb, 1 instrument tray pcb).
- 2 exagonal membranes
- 1 rectangular membrane
- 2 suction filters
- 1 basin filter
- 1 regulation valve
- 2 cordon springs

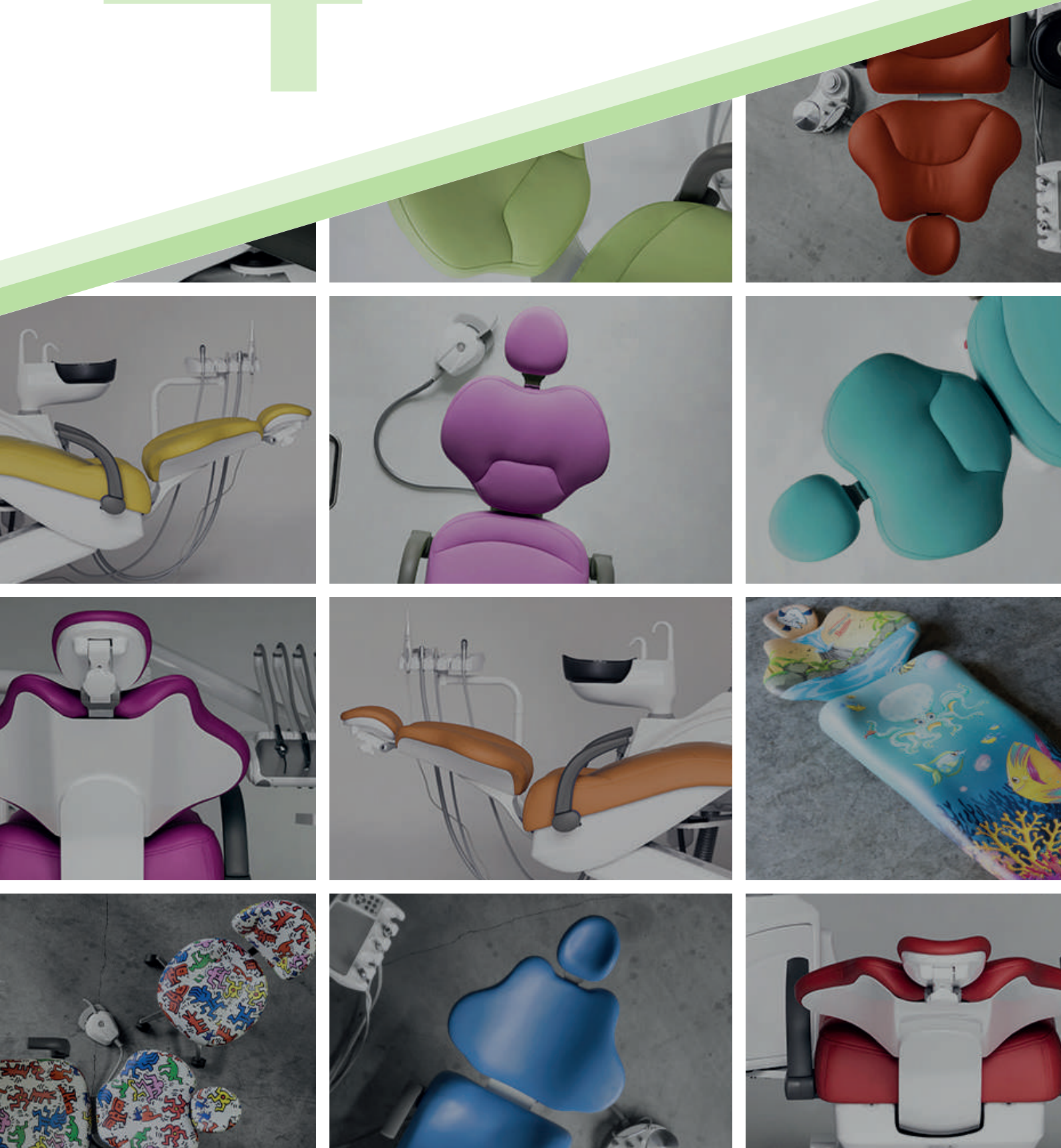
COMPLETE SPARE PARTS KIT



- All the electrical boards of the unit (1 main board, 1 transformer, 1 pcb for the water unit, 1 assistant tray pcb, 1 instrument tray pcb).
- 4 exagonal and 2 rectangular membranes
- 2 suction filters
- 1 basin filter
- 1 regulation valve
- 2 cordon springs
- 1 weak and 1 strong suction handle
- 2 syringe tips
- 1 optic fiber cordon
- 1 assistant tray label + 1 instrument tray label
- 1 bottle for disinfection system
- Set of silicone pads
- 1 tap for basin and 1 tap for glass



COLOR YOUR CLINIC





COLOR YOUR CLINIC

IT'S A MATTER OF LEATHER

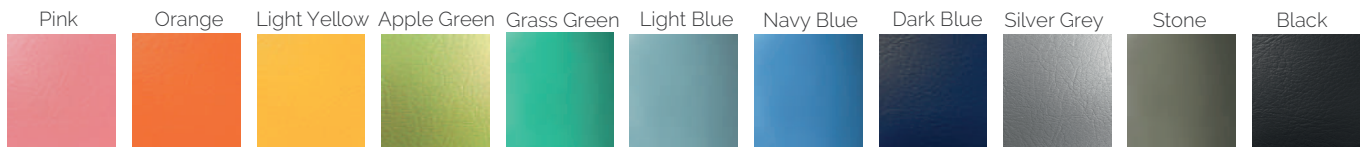
seams or no seams, that is the question!

Standard PU, standard Fiber Leather and more than 200 customized colors

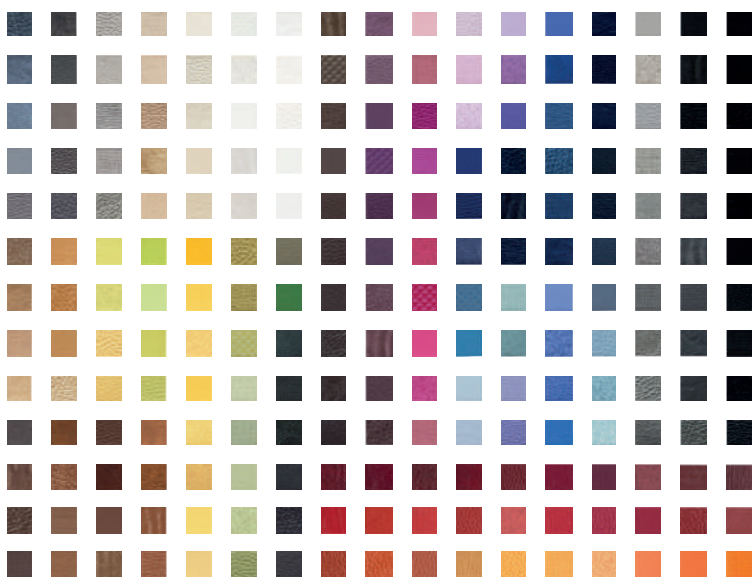
: S&S has **the widest choice of upholstery you have ever seen!**

The Pu standard polyurethane upholstery is available with no additional costs. Seamless for an **easier cleaning procedure**. With a small additional cost you can select the elegant Fiber Leather upholstery, with seams for a **higher comfort**.

PU LEATHER



FIBER LEATHER



CUSTOMIZED LEATHER

With a slightly higher additional cost, you have the possibility to choose from **more than 200 colours**.

This kind of upholstery is **Fiber Leather with seams**.

Impossible not to find your favorite colour!



5 COMPANY



PRODUCTION

The production process is the heart of our company, and for this reason we follow every stage with particular care, starting from the choice of materials, paints and components, to assembly and final control. Each unit, in fact, is subjected to a careful double check, carried out by our specialized technicians, during assembly phase and before shipment.

Our **ISO 9001** and **ISO 13485** standards testify that these processes are actually carried out and respected.

STOCK

We want to be extremely **fast in deliveries**, so we always have in stock several units, in large part already assembled and ready to be configured according to our Customers needs. All the necessary parts and all the options are **available in stock** and we can complete the assembly of the unit and arrange the delivery in a few days.



SHIPMENT

The shipment can be arranged according to each customer's needs. We usually ship the unit in a **single wooden case**, but, if required, we can ship the unit in two separated boxes, in order to make the delivery to the clinics easier. The **two separated wooden cases** are smaller in size and less heavy, so the download from the truck is easy even without a lifter and the reduced dimensions allow an easy storage while waiting for the installation.



COM
PA
NY

ASSISTANCE

Always at your side

WARRANTY EXTENSION

The standard warranty on our dental units covers a period of **1 year** but, if you want, you can extend the warranty **up to 5 years**.

WATCH OUR VIDEOS

On our **website** and on our **YouTube** page you can find many videos of the unit, on its configuration, on the options available, tutorial videos for the installation, maintenance, sanitization, etc., in order to set up and take care of your chair in the best way possible.

www.simplesmart.it

We created this website to support our dealers and customers in the best way possible. You can have a complete overview on our company and our products, you can even configure your customized unit. Using our **configurator** you can receive a personalized quotation without any purchase obligation.

With Simple&Smart you can always find the best and simplest solution for your needs.

Follow our social media pages to discover more and to be updated on our news, products and events.

LIVE ASSISTANCE

WhatsApp number on request if you are our dealer.

We are **always at your disposal**. You just have to contact our live assistance department on **Whatsapp**. Our technical staff will assist your technicians to solve your problem in few minutes.

REPORTS ON FILES

Complete **PDF reports** are available to be sent by email. Detailed information for **problem solving** are explained in a specific manner on the bases of the problem you have indicated.





CERTIFICATES

we take it seriously

ISO & CE CERTIFICATES

Our dental units are Class IIa medical devices. The **EC Certificate** and **ISO 13485 Certificate** ensure that our products and procedures are compliant to the regulations in force and to the severe ISO standards. **These certifications guarantee the quality of our products and services.**



CERTIFIED TECHNICIANS



To ensure a perfect installation and a proper after sales assistance service, Simple&Smart certifies all the distributors' technicians, after attending a **specific training**. An Enabling Certificate is issued to the technician. All this, in order **to provide a safe and reliable product to the customers and a professional and precise technical support.**

