

MedPark

S1

**NEW BONE  
NEW LIFE**

**DENTAL**

NATURAL BONE SUBSTITUTE



# NEW BONE NEW LIFE

## Keywords



S1 (Bovine Bone)



Bovine Bone Mineral

VS

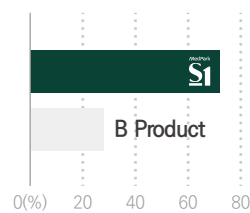
- 1 Excellent adhesion and fixation
- 1 Rigid Space Maintenance
- 1 Excellent osteoconduction



S1 (Bovine Bone)

- 1 Easy to manipulate
- 1 Various indications

## 1 High porosity



### Porosimeter Test

- Percentage of porosity is more than 70%
- High porosity allows rapid penetration of growth factors

## 1 Improved Hydrophilicity



### Hydrophilicity Test

- Porous structure makes blood circulation easily

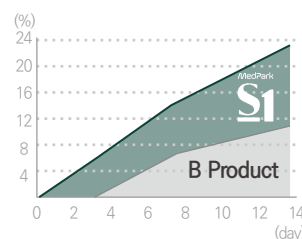
## 1 Excellent shape maintenance



### Pressure Test

- Perfect shape maintenance against high pressure from outside compared to other bone

## 1 Bone formation rate



### Mass Increase Test

- High attachment rate of ions to S1
- 21% increase in mass after 14 days due to high adhesive rate of ions

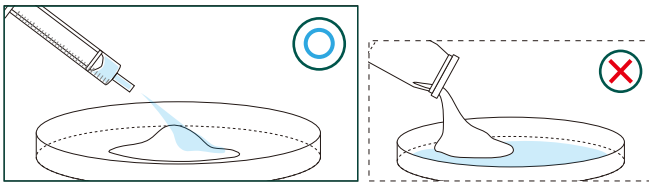
## Quick Guide

Please apply the liquid as indicated

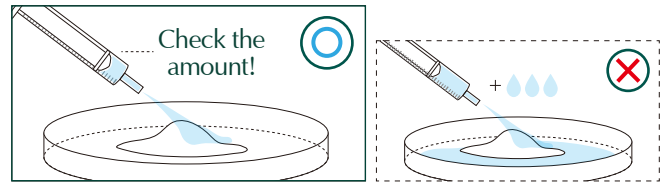
Each package is for one-time use only

Do not mix with other bonegraft

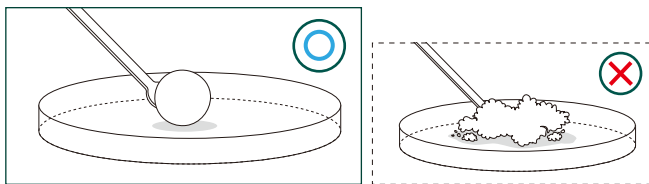
Mix with solutions well enough



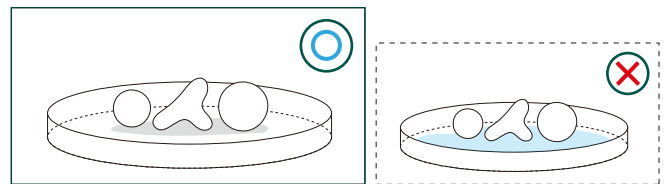
1 Place S1 in the tray and hydrate the materials with saline



1 Please use the recommended amount of saline only.



1 Knead the dough enough for at least 30 seconds by using hands or tools to form a lumpy shape before using S1.



1 Do not soak in saline after shaping for a surgery

## Recommended Hydration Amount

| Particle size                        | Weight                | Recommended Hydration Amount |
|--------------------------------------|-----------------------|------------------------------|
| <b>0.2 ~ 1.0 mm</b><br>(Powder Type) | <b>0.5cc</b> (≈0.25g) | 💧 <b>0.3 cc</b>              |
|                                      | <b>1cc</b> (≈0.5g)    | 💧 <b>0.6 cc</b>              |
|                                      | <b>2cc</b> (≈1.0g)    | 💧 <b>1.2 cc</b>              |

| Particle size                      | Weight                 | Recommended Hydration Amount |
|------------------------------------|------------------------|------------------------------|
| <b>1.0 ~ 2.0 mm</b><br>(Chip Type) | <b>0.75cc</b> (≈0.25g) | 💧 <b>0.4 cc</b>              |
|                                    | <b>1.5cc</b> (≈0.5g)   | 💧 <b>0.8 cc</b>              |
|                                    | <b>3cc</b> (≈1.0g)     | 💧 <b>1.6 cc</b>              |
|                                    | <b>6cc</b> (≈2.0g)     | 💧 <b>3.2 cc</b>              |

# Concept of customized Bonegraft material

## Sticky Bone without Blood Collection!

### Bovine Bone Mineral

Unable to mold  
Lack of retentivity

Scattered & Flowing

Blood collection to make  
sticky bone

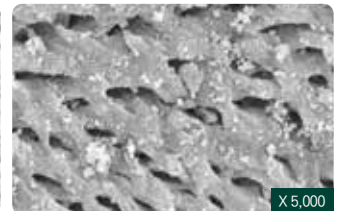
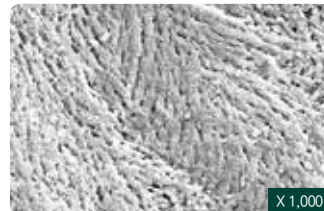


Moldable & Customizing

Customized build up

Sticky bone made easily  
with saline or blood

# BOVINE BONEGRAFT



**S1 has similar structural characteristics  
with human bones**

Due to its high porosity, S1 provides the most optimal environment for promoting osteoblast adhesion, blood vessel formation, and bone regeneration.

# Innovative technology

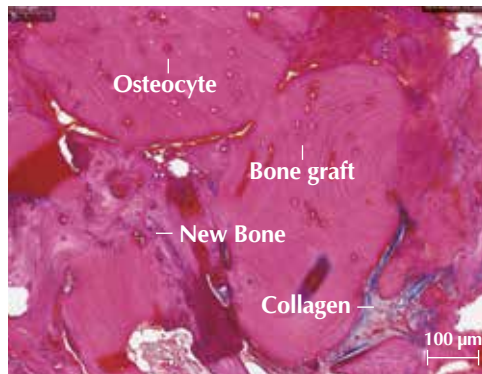
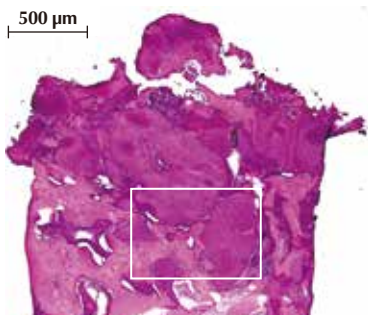
## Check it out for yourself !

### Biopsy

※ Hematoxylin & Eosin Stain

#### Case 1 | #14, Ridge augmentation

Patient Info : 65 years-old, Female

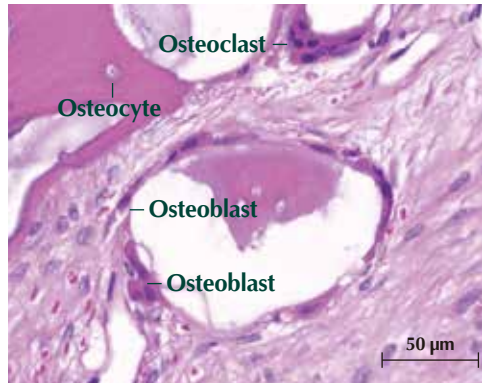
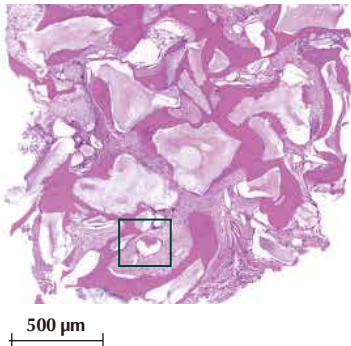


#### Clinical Opinion

- Excellent bone formation around bone graft material
- The graft materials appeared surrounded by newly formed bone
- No sign of inflammation or immune rejections

#### Case 2 | #26, Sinus graft

Patient Info : 73 years-old, Female



#### Clinical Opinion

- Excellent osteoconduction as it shows osteoclasts and new bone formation
- No evidence of inflammation or immune rejection

### Clinical cases

#### Case 1

Patient Info : 59 years-old, Female



Before surgery



Placing Fixture



Grafting S1



Suture



After grafting S1



Final prosthesis

#### Case 2

Patient Info : 66 years-old, Male



Before surgery



Placing Fixture (Implant placement at #11, #21, #22)



Grafting S1



4 months after S1 graft



X-ray after final prosthetics



Final prosthesis

# MedPark



E-mail [biz@medpark.net](mailto:biz@medpark.net)  
[www.medpark.net](http://www.medpark.net)