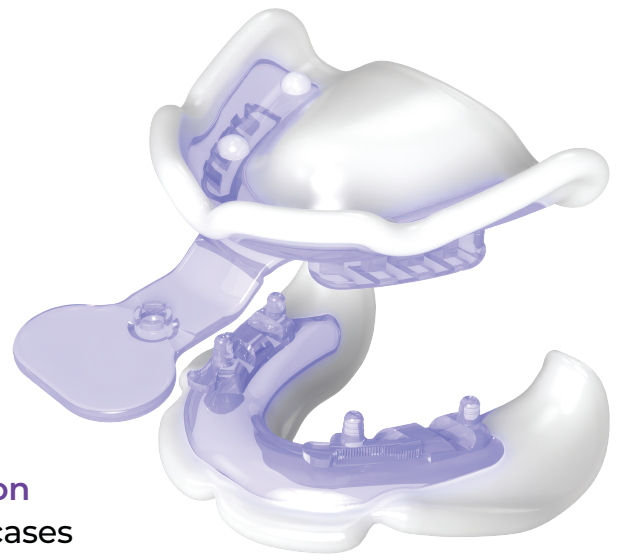


JB Tray

Instead of individual tray

Immediate individual trays for **easy vertical dimension measurement**. Great for overdentures and full-arch cases



One-Step

Obtain final impression & take VD and centric relation, all at once



Faster & Convenient

Skip the production of individual trays and occlusal wax rim



Less Patient Visits

Reduce patient visits from 5 to 3 with simplified process



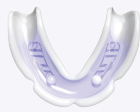
Digital / Analog Solution

Can be used for both traditional and digital denture processes

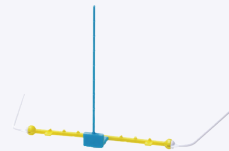
Components



Upper Tray × 5 ea



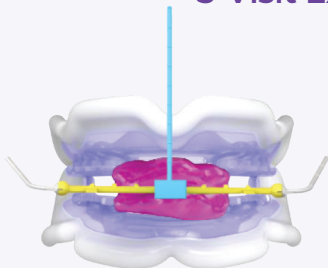
Lower Tray × 5 ea



POP Bow

A prefabricated system that can easily acquire and provide occlusal plane info

3-Visit Express Overdenture Workflow using JB Tray



1st Visit

Take final impression & jaw relationship



2nd Visit

Metal framework try-in



3rd Visit

Place overdenture in patient

Enquire Today

02 8084 2900

E info@minimaximplant.com.au · W minimaximplant.com.au



How to use JB Tray

Scan for
Full Tutorial

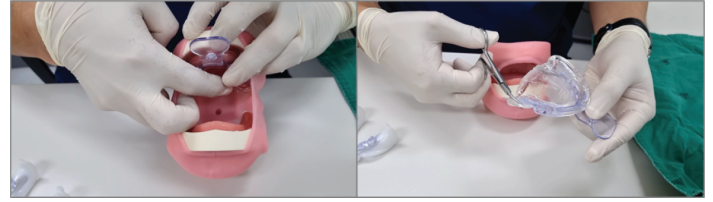


Maxilla



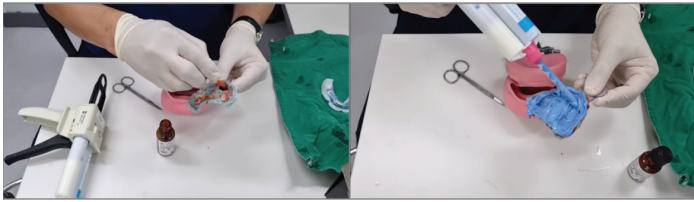
1 Tray Softening

Soften the tray in warm water (70~75°C). Approximately 1 min is required to soften the tray.



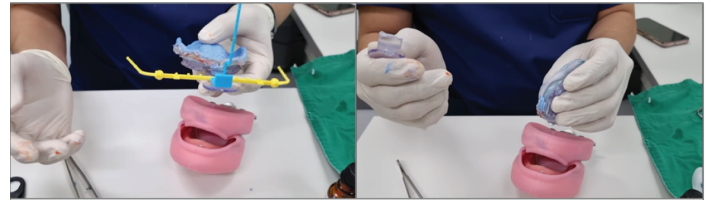
2 Border Molding & Shaping of Tray

Shape the softened tray as needed. It stays moldable for 2~3 min after being warmed. Repeat step 1, 2 if necessary.



3 Final Impression

Apply tray adhesive and impression material, then take the final impression.



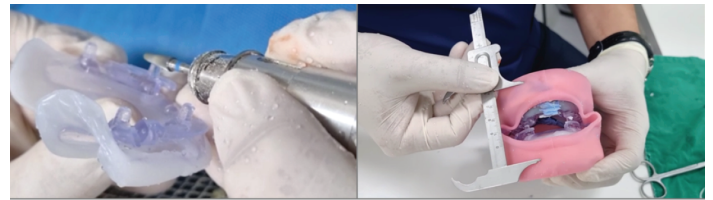
Tip! If both jaws' impression needs to be taken at the same time, you may attach POP bow to the tray's handle or simply remove the handle. This allows you to evaluate facial features better and also enables patients to move lips freely.

Mandibular



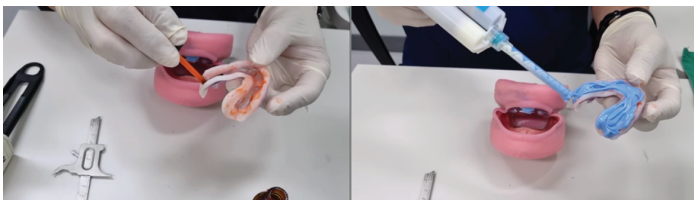
1 Tray Softening & Shaping of Tray

Same as step 1 and 2 of maxilla application.



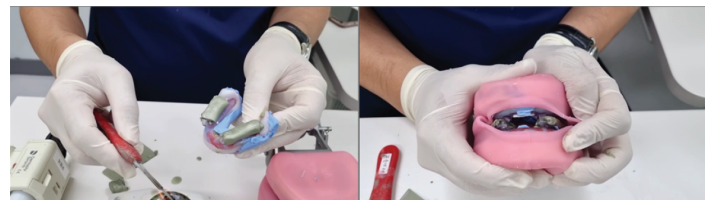
2 Vertical Dimension Decision

Decide on the vertical dimension (VD) by utilising vertical dimension rods.



3 Final Impression

Apply tray adhesive and impression material, then take final impression.



4 Centric Relation

Record centric relation with bite registration material (silicone impression material or wax)