



*Tighten posts
with hand!*



Compact **photogrammetry** with supreme accuracy.

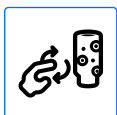
Safer, faster full arch procedure with MK3 scanner



High Accuracy
±6 µm micron repeatability



Compact & Portable
Battery powered and wireless



Easy Use Scan Posts
Finger-tightened scan posts



LED Display
Built in display for direct check

Call Now **02 8084 2900**

info@minimaximplant.com.au | minimaximplant.com.au



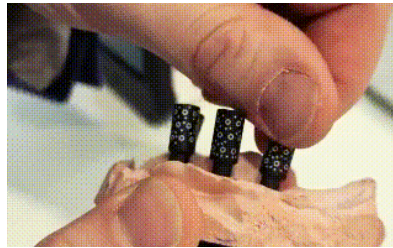
The Tupel 3D MK3 implant scanner **measures implant positions** by using marker posts and a camera system.

Accuracy



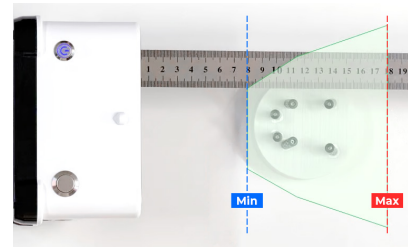
Scan the QR code to read the accuracy test report

Small quick fit posts



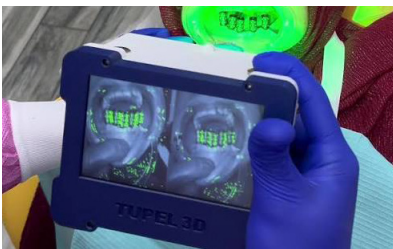
Posts can be finger-tightened. No need for extra tools

Wide scan range



Absolute max: 18cm
Absolute min: 7.5cm

LCD display



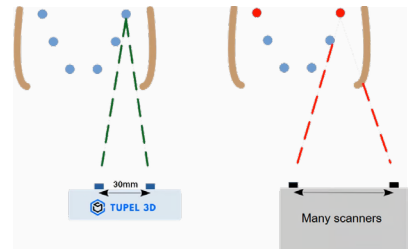
Built in display - no rubber necking to a laptop

Wireless operation



Convenient scanning with no messy cables

Narrow camera separation



Allows more reliable capture of posts at the back of the mouth

Specification

MK3 Scanner

Scanner Size	14.2 × 9.1 × 11.4 cm
Weight	650 g
Power	15W
Battery Life	Up to 25 scans (2.5 hrs standby)
Charge Time	2.5 hours
Battery Type	Lithium-ion
Connectivity	Wi-fi / USB 2.0 or 3.0
Illumination	3 × Green LEDs, 520nm
Display	5" LCD Screen
Camera	2 × 2MP Global Shutter
Operating Temp.	18 - 28°C
Storage Temp.	5 - 40°C (10 - 25°C recommended)

Scanning Condition

Optimum Scan Range	6 - 8 cm (lens to first post)
Max. Ambient Light	5000 lx

Scanner Accuracy

Positional Accuracy	± 9 µm
Positional Repeatability	± 6 µm
Angular Repeatability	± 0.034°

Software Functions

Auto calibration	Auto merge, enable up to 10 abutments scans per jaw
Real-time scanning feedback	STL & coordinates export
Able to scan up to 6 posts per scan	Iterative noise reduction for enhanced accuracy

Call Now **02 8084 2900**

info@minimaximplant.com.au | minimaximplant.com.au

